



Team Vicar for the Bure Valley Group of Churches within the Aylsham & District Team Ministry



St Ed's Community Church, Badersfield



St Peter's Church, Brampton



St. Mary's Church, Burgh-next-Aylsham



St. Andrew's Church, Buxton



St. Andrew's Church, Lammas



All Saints, Marsham



St Michael and All Angels, Oxnead

With primary pastoral responsibility for the parishes of Badersfield, Brampton, Burgh-next-Aylsham, Buxton with Oxnead, Lammas and Marsham

Introduction from the Bishop of Lynn

The parishes in the Bure Valley group of churches belong to one of the Diocese of Norfolk's most flourishing Team Ministries. The Aylsham Team has been in existence for many years and those ministering here can expect to find both the benefits of supportive lay and ordained colleagues and the joys of pastoral care of particular church communities. The benefice clergy work well together to ensure appropriate ministry and mission in each of the churches within the Team (by, for example, sharing the ministry to couples coming for marriage at one of the most attractive church buildings), and collaboration across the Team is a high priority.

The pattern of ministry in a Team yet with local responsibility enables parishes in the Aylsham Team to connect well with their local communities. It is fair to say that the next Team Vicar of the Bure Valley Group of Churches will have a heart for community ministry and will appreciate the considerable overlap which exists in rural parishes between church and community, using this to draw, as this profile suggests, the community into the church as well as the church into the community.

The Diocese of Norwich recently adopted its new vision, to be Transformed by Christ: Prayerful, Pastoral, Prophetic. You can find out more about that in the Diocesan notes and other material accompanying this profile. Within the wider diocesan family, you will find the heart for mission and ministry which I hope you will discern within this profile, as well as the same genuine desire for the post-Covid church to take the shape and carry out the work which the Lord desires. You will be in the prayers of many, those who know you and those who do not, as you seek to discern whether you are called to be the next Team Vicar of the Bure Valley. May the Lord bless you richly as you undertake this discernment.

+ Jane

The Rt Revd Dr Jane Steen
Bishop of Lynn.



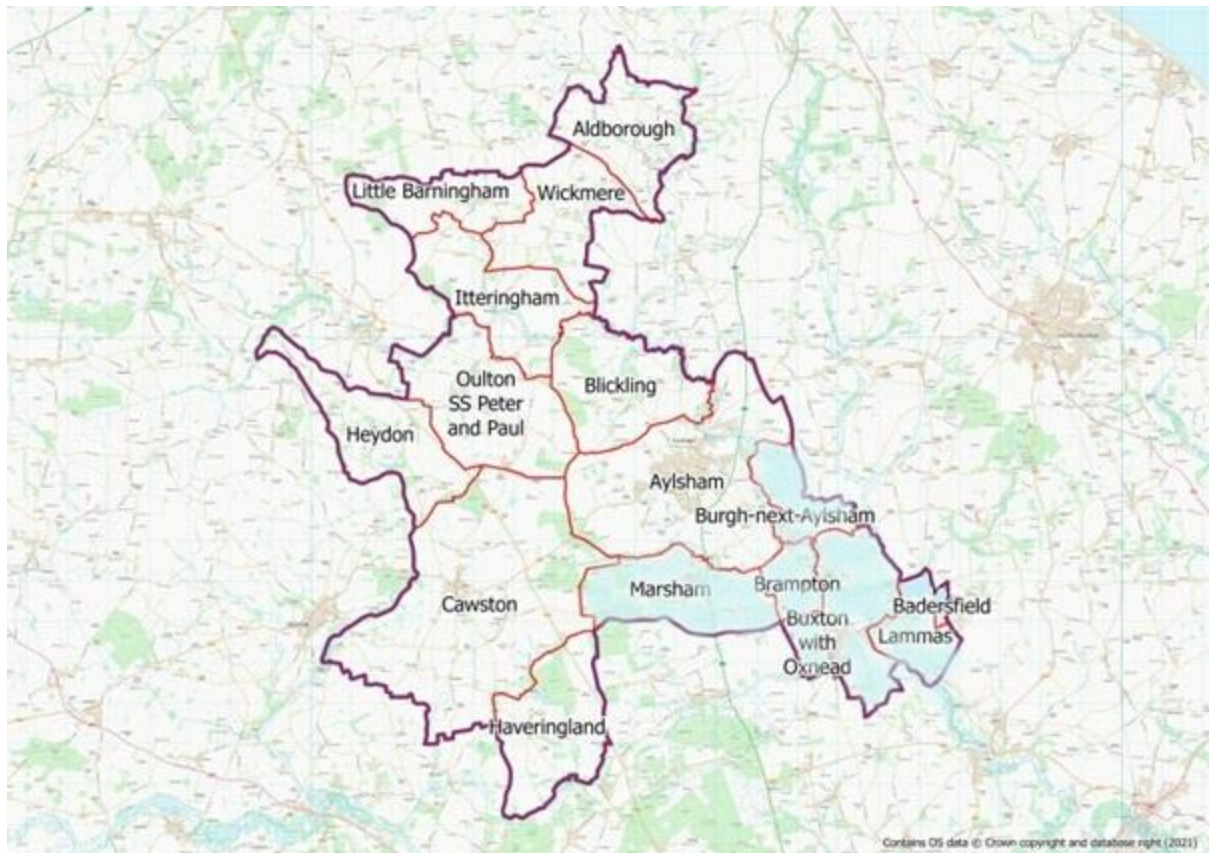
WELCOME

Welcome to our profile and thank you for your interest in the post of Team Vicar for the Bure Valley Group of Churches.

In this profile you will read about the Aylsham and District Team Ministry and the benefits of being part of a large team working together and you will also read about the Bure Valley Group of churches who are very much looking forward to welcoming their new Team Vicar, someone who will be able to lead them into the next stage of their journey with God, serving the people and churches in these very beautiful Norfolk villages.



MAP



THE AYLSHAM AND DISTRICT TEAM MINISTRY

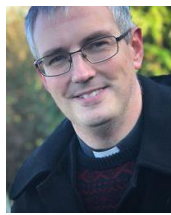
The Aylsham & District Team Ministry is made up of seventeen unique parishes centred around the Market Town of Aylsham which has the largest community in the team.

The team comprises the Revd Canon Julie Boyd, Team Rector and two full time team vicars based in Buxton and Cawston. Members of the ministry team have pastoral responsibility for a group of parishes and also share expertise across the team in a mutually supportive way. The team also includes a full time curate, a number of active retired clergy, two licenced lay ministers (Readers), a number of Authorised Worship Assistants (AWAs) and a part-time administrator.

WHO ARE WE?



Team Rector
Rev Canon Julie Boyd
Aylsham and Blickling



Team Vicar
Rev Andrew Whitehead
Aylsham West Parishes
*Cawston, Heydon, Haveringland, Oulton, Aldborough,
Itteringham, Little Barningham, Sustead and Wickmere*



Assistant Curate
Rev Natalie Rees



Team Administrator
Hannah Hartshorne



Licensed Lay Minister,
Fiona Tibbitt
*With ministerial focus in
the Aylsham Group*



Licensed Lay Minister,
Kandi Kammoun
*With ministerial focus in the
Bure Valley Group*



Authorised Worship
Assistant for the Bure
Valley
Mark Little

Authorised Worship
Assistant for the Bure
Valley
Dorothea Charmley

HOW WE WORK TOGETHER

Diversity and Interdependence

Within the Aylsham team it is very important to us that we affirm the uniqueness of each parish and the identity of each group of parishes in the team.

Within each group the clergy, licenced lay ministers and lay people work quite independently, all the while enjoying the support of colleagues across the team and regularly coming together for special events and celebrations.

By working in this way, the parishes in the groups are able to relate very directly to their own team vicar to build strong relationships and discern the right responses to the call to ministry where they are. Through this we hope to build strong and caring communities where we might offer afresh the Good News of Christ Jesus to the people we serve.

Size matters

The scale of our team means that, by working together, we can benefit from the economies of scale. Our admin support is centrally focussed in Aylsham, with good office facilities, a well-specified printer and a part-time team administrator who among other tasks looks after the weddings administration for the team. We have also developed a system whereby all the administration of fees and quarterly returns are dealt with together by our team fees administrator.

Deanery Chapter and Deanery Synod

We are part of the Ingworth and Sparham Deanery and have an active clergy chapter which meet regularly. It is a supportive chapter, with generous sharing of ideas and experiences. There are usually a couple of times a year when we would also meet for a meal or have a Chapter Quiet Day.

Deanery Synod is under the leadership of the Rural Dean, Revd Keith Rengert and Lay Chair, Kandi Kammoun meeting three times a year. The level of engagement of both laity and clergy being demonstrated by our being able to fill all our places on Diocesan Synod for this triennium.

OUR NEXT TEAM VICAR FOR THE BURE VALLEY GROUP

We are seeking an enthusiastic and mission minded full time Team Vicar to complement our present ministry team as a visible presence for good in our community.

The Team Vicar for the Bure Valley Group of Churches will have primary pastoral responsibility for the parishes of Badersfield, Brampton, Burgh-next-Aylsham, Buxton with Oxnead, Lammas and Marsham.

OUR HOPES

In writing this parish profile we have engaged the churches of the Bure Valley Group and the wider community in asking questions such as, “What do you value about the Bure Valley Churches?”, “What would you like to see in the future?” and “What kind of person should lead us?”. You will see quotes in the profile that come from this survey.

It is also important to note that there was a lot of agreement across the group. As we pray for the right person to join us here at this new phase of our shared life and ministry together we hope that this profile will help you to discern whether that person might be you.

OUR VISION FOR THE BURE VALLEY PARISHES

- To share the Good News of Jesus Christ through worship, prayer and loving service.
- To be an attractive and welcoming community, encouraging the participation of all.
- To serve the people of our parishes and to build on our ministry to families and young people.
- To grow our ministry in the schools in Buxton and Badersfield
- To develop greater opportunities for teaching and to explore new ways of living out our faith.
- To value our church buildings as witnesses to God’s love and care for our communities

What we hope for in a Team Vicar

Someone who ...

- is secure and confident in the love of God
- is emotionally intelligent and pastorally aware with good interpersonal skills
- will be an active presence in the community, offering support and care to those in need.
- will develop our work in the schools within the Bure Valley group of parishes and build on existing good relationships
- will embrace a variety of forms of worship, both traditional and modern
- will strengthen our faith and build our confidence through thoughtful preaching
- will help us grow the church into the community and the community into the church, encouraging us to discover new ways of reaching out. Someone who will help us to create a plan for mission
- will be an enthusiastic team player within the wider benefice.

What we can offer

A very warm welcome to whomever God sends to be our next Team Vicar

A supportive and cohesive Ministry Team with a part-time Administrator based in Aylsham to ease the administrative burden across the team.

Churches committed to loving God through our worship, service and fellowship, seeking to be fully inclusive in our welcome and pastoral care

Prayerful, supportive and friendly congregations

PCCs who recognise the importance of meeting their parish share requests (see Appendix A)

Full re-imburement of expenses incurred in the course of carrying out their duties

A newly refurbished comfortable 4 bedroom vicarage in Buxton, central to the Bure Valley churches

Worshipping tradition

The style of worship reflects the needs of the people, offering a variety of styles yet keeping a gentle feel. Our church tradition might helpfully be described as central. Robes are currently worn for all our Eucharistic services.

Communion services are from Common Worship (contemporary and traditional) and the Book of Common Prayer, according to the individual church tradition.

Most of our churches have church organs in good repair, regularly tuned and played. We use a variety of hymn books across the churches.

Licensed Lay Ministers (Readers) take an active part in services, leading Morning Prayer and Evening Prayer, sharing in the leading of communion services, preaching at communion services and sharing in the leading of other special services such as Nativity Services and Acts of Remembrance. There is a Licensed Lay Minister and two Authorised Worship Assistants in the Bure Valley as well as a number of retired ministers with permission to officiate who offer their support. We are grateful also for the proactive and enthusiastic laity in the Bure Valley Churches, with an increasing number of people reading at services.

Our active PCCs meet regularly, and others support the wider work of the church.

What do we value about the Bure Valley Churches?

“SENSE OF COMMUNITY”

“WELCOME GIVEN TO EVERYONE WHETHER THEY ARE BELIEVERS OR NOT. IT MAKES A BIG DIFFERENCE TO THE COMMUNITY”

Current service pattern:

The service pattern is organised such that there is always a morning service of Holy Communion or Morning Prayer in the group at 9:30am every week (apart from the 5th Sunday). There are many church members who regularly attend the services at all the churches in the group week-by-week which gives a wonderful boost to our worship and a much-valued sense of mutual care and support.

Across the team of seventeen parishes all our services are held at the same times (8am, 9:30am, 11am, 4:30pm). This means that the ministry team can offer support to one another when cover is required.

1st Sunday

09.30 – Buxton	CW Holy Communion
16:30 – Lammas	BCP Evening Prayer

2nd Sunday

09:30 – Burgh-next-Aylsham	CW Holy Communion
09:30 - Badersfield	Celtic Style Holy Communion
16:30 – Brampton	BCP Holy Communion

3rd Sunday

09:30 – Lammas	BCP Holy Communion
11:00 – Buxton	Family Service
16.30 – Oxnead	BCP Evening Prayer (May to October)

4th Sunday

09:30 – Marsham	CW Holy Communion or CW Morning Prayer
09:30 – Badersfield	Celtic Style Holy Communion
16:30 – Brampton	BCP Evening Prayer

5th Sunday

A benefice service at 11:00

This is currently held at Aylsham Parish Church.

Mid-week Services

The daily office is shared in Buxton at 8am on Mondays. On the 4th Tuesday of the month there is a service of Holy Communion at 11:30am followed by a light lunch.

What do we value about the Bure Valley Churches?

“HISTORY AND BEAUTY”

“OUR CHURCH IS A FOCUS FOR THE
COMMUNITY”

“EACH OTHER”

AND SO TO THE PARISHES....

THE BURE VALLEY GROUP OF PARISHES

The parishes of Badersfield, Brampton, Burgh next Aylsham, Buxton with Oxnead, Lammas with Little Hautbois and Marsham lie in open countryside nine miles north of the beautiful city of Norwich, with its splendid cathedrals, excellent shopping, international airport and rich history. To the north and just 6 miles away lies the market town of Aylsham, with its fine church, many shops together with a number of restaurants.

The upper reaches of the River Bure, where these villages are situated, are the most beautiful of all the Norfolk Broads river systems.

THE VICARAGE



The Team Vicar for the Bure Valley Group of churches will reside in the Buxton Village. This 4-bedroom detached house is situated on the edge of the village of Buxton. It is a well presented home and provides superb family accommodation with a separate internal entrance to access the facilities for parish work. A particularly attractive feature of the Vicarage is its garden.

The accommodation comprises four bedrooms, one en-suite and one with a built-in wardrobe, and a family bathroom. On the ground floor, the lounge has French doors opening onto the secluded gardens. There is an adjoining dining room with door to a light and airy double-aspect kitchen with utility and boiler rooms. In addition, there is a downstairs cloakroom and WC.

The study has its own entrance through a porch shared with the main house. The study offers a pleasant environment for quiet reading and service preparation.



Outside there is a detached double garage with hard standing for at least four cars. The garden is laid mainly to lawn but has a variety of mature fruit trees.

THE BURE VALLEY CHURCHES



BADERSFIELD COMMUNITY CHURCH

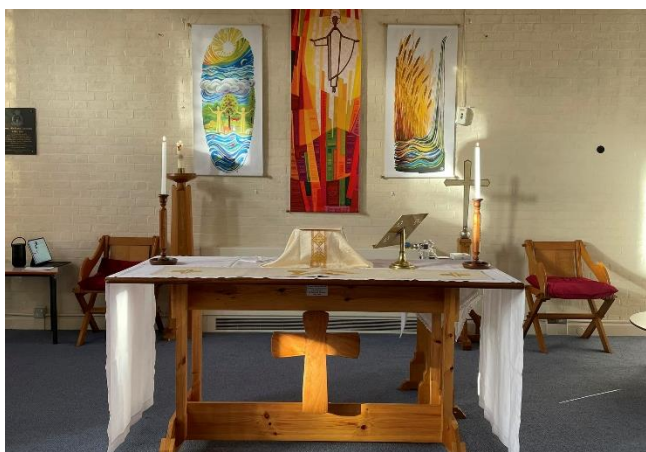
The Church and Community

St Edward's Church was formerly the RAF Chapel for the base. The chapel was bought by the Diocese and reordered into a more flexible church hall space, with smaller function rooms, kitchen and other facilities. It is light and modern in style and very well equipped, offering space for community gatherings, for worship and for learning opportunities. The church is very much at the heart of the community.

The Badersfield community is predominantly young families, who either own or rent houses, following the closure of the RAF station. Badersfield is very well situated as an attractive rural setting within easy reach of Norwich, North Walsham and Aylsham and the north Norfolk coast. St Edward's offers a welcoming space at the heart of the community, alongside the pub The Diplomat, the Battle of Britain Hall, the shop and the hair salon.

There is one school in the village, the Douglas Bader Short Stay School for children aged 5 to 16. We do not currently have any links with the school.

HM Prison Bure is located in the village of Badersfield, a Category C men's prison with its own chaplaincy team.



The Congregation

There are two Sunday services a month of Holy Communion in the Celtic style and our music is a mixture of contemporary and traditional provided using a music system. Our congregation is approximately 16 adults. There are also special events and festivals celebrated at the church and well supported by the community.

Serving the Community – Weekday Church

We are passionate about making significant connections with our community. We have the advantage of having a modern building which provides excellent catering and toilet facilities, and a wide range of equipment and quality toys. These enable us to provide...

Weekly ‘Tinies to Tots’ church-led group on Mondays run by volunteer helpers.

Weekly ‘Slice of Life’ café for the community, with special charity events.

Bi-weekly ‘Make do and Mend’ craft group.

Half-termly ‘Messy Church’ for local school aged children and their families.



We are a small church family with open hearts. We are developing many significant relationships. We are excited about developing a sense of our unique identity as a church in the community for the community.





BRAMPTON

The Village

The village of Brampton lies somewhat hidden away overlooking the river valley of the Bure. The village has two main parts; an area to the north near St Peter's Church and a southern section which lies nearer to the Bure. To the east lies the hamlet of Oxnead which consist of Oxnead Hall, the former home of the Paston family of letter-writing fame, along with farmhouses and some farm cottages. Further to the south near the parish boundary with Buxton lays another cluster of houses known as the Red House.

There are roughly 50 houses in total with a population of 180 or thereabouts. There is no school, pub or shop. Most people work away from the village although there are some thriving small businesses and a number work from home at least part of the time. There are several young families living within the village.

The Church of St Peter



St Peter's Church is one of the round-tower churches of Norfolk. It is of early Norman origin and is of part brick, stone but mainly flint construction. It is well maintained. The churchyard is carefully maintained using local mowing contractors to fit in with our conservation aims. The churchyard has a superb display of daffodils each Spring.

Church land includes the village allotments and an acre of farmland. The allotments are popular and serve as a link to the community, for example decorating the church at harvest-time. Part of the Church land is leased to the Parish Council for use as a Village Community Field.

The Electoral Roll stands at 11. There are four people on the PCC.

The Congregation

The congregation is understandably small in a small village. BCP services are held twice a month in the afternoon. The number of congregant's is between five and ten. There is a good attendance at the main festivals. Fundraising takes many forms. Some years include an occasional fete, garden parties, choral concerts and quizzes. We hold occasional archaeology talks within the Church and this is of particular interest to the villagers. The area is rich in history, particularly from the Roman period.

We are actively seeking guidance in attracting more of the villagers, particularly newcomers, to the Church. A flower arranging group is active and the church is seen as an important focal point of the village and its life.





BURGH-NEXT-AYLSHAM

The Village

Burgh-next-Aylsham, surrounded by agricultural land, is on the River Bure and two miles from the town of Aylsham.

Parts of the village dates to the 16th century; it has just over 50 houses, with an estimated population of around 120.

There is a great sense of community through the village, best perhaps exemplified by the village fete. All members of the village participate in the organising and running of it, and profits are shared by the Church and Reading Room. It comprises a wide range of traditional pursuits and games as well as food and drink stalls and regularly commands an attendance of some three or four hundred people.

The Church

Parts of Saint Mary's Church date back to the thirteenth century; it is a light, welcoming building with a part thatch, part tiled roof. Particular points of historical interest include the Chancel, a rare example of Early English architecture of the early 1200's and sympathetically restored in 1877, and the 15th century seven-sided sacramental font. There are 10 people on the Electoral roll and seven members on the PCC.

The Church has a seating capacity for 70 and is used not only for services but also for social and fundraising occasions. We offer a vibrant programme of events, including Harvest Suppers, Pancake Mornings, Quiz Evenings, Open Gardens, and a traditional Burns Night Supper.



The Congregation

Burgh has one service of Common Worship Holy Communion a month on the Second Sunday with average attendance of 12 people. Numbers rise for the seasonal services, to more than a 100 for our Carol Service and typical 30 or so for others. We have recently held an outdoor Pet Service which was a wonderful occasion and very well supported.

On Easter Sunday morning people are invited to one of the churches in the group for the Sunrise Service of Holy Communion. Burgh's beautiful position on the River Bure provides the most perfect setting for this service.

The village community is supportive of the Church, and the challenge is to engage more of the younger residents into more regular attendance.



"We want to learn how to be church for the community in a new way"

"we want our churches and our new vicar to be a presence in the villages"



BUXTON

The Village

Buxton Village is sited between Coltishall and Aylsham, on the river Bure. It is close to the Norfolk Broads, 8 miles from the historic city of Norwich and within easy reach of the North Norfolk coast. The market towns of Aylsham and North Walsham, both of which have established supermarkets, are close by.

The village housing consists of mostly private and some council houses. There is a fish and chip shop and a convenience store cum Post Office. The population is over 2000. There is a Primary School, ranked outstanding by Ofsted, which serves the local area and a Pre-school who meet in the Village Hall. The High School catchment area covers Aylsham, North Walsham and Broadland High. We currently have a church Open the Book team who go into the Primary School regularly, the school hold special services in the church throughout the year and there is a friendly relationship between church and school. We also have a good relationship with the Pre-school where members of the ministry team visit regularly and also welcome them into the church for services. Buxton also has a residential care home for people with learning disabilities, residents are regular attenders at our monthly coffee mornings.



Transport links are good, with bus services into Norwich and to North Norfolk. Buxton is a halt on the Bure Valley Railway (narrow gauge) running between Aylsham and Wroxham. There are active community groups (Scouts, Guides etc.) who have their own purpose built building plus a camping area on Balay Field and a small skate park, floodlit football practice area, 3 junior football pitches, a cricket pitch and changing/toilet facilities housed in Portacabins. The senior football pitch is located next to the Village Hall, which is opposite the Church. This Hall has a fully equipped kitchen and the usual facilities, it is the meeting place for the monthly Jubilee Café and the WI. A flourishing Bowls Club is located on the Village Hall recreation ground. There is also a popular Photographic Club. The Vicarage is a modern, four-bedroom house in an attractive setting.

The Church

Buxton Church Building dates from the 13th Century, some of which still exists. It has been added to and altered over the centuries to the flint building we see today. The fabric of the Church is in good order and constantly maintained. The tower holds 6 bells which were refurbished and re-hung in 2006. On discovery of a crack in the treble bell in 2022 a new bell has been cast to commemorate the Platinum Jubilee of her majesty the Queen. A very successful Bell Day was held in the church to give people the opportunity to see the old treble bell and to learn about its history. We held a dedication service for the new bell in 2023.



A Victorian organ is used at some of our services, with an electronic “music box” in use for some services. We have recently installed a new under pew heating system in the church and also a new sound system which has been very generously donated to the church by one of its members. The Church has kitchen and toilet facilities, and some pews have been removed to encourage more versatile use of the space. An induction loop system is installed. There has been some modernisation of the old choir vestry to provide a sound proofed and warm area for smaller gatherings and meetings.

The Congregation

The congregation is very willing and able. There is an enthusiasm for activities and the church is well cared for. There is a service at 9:30am on the first Sunday of the month with an attendance of around 20 older adults. There is also a newly created Family Service at 11am on the third Sunday which attracts people of all ages. Seasonal services such as Remembrance, Christmas and Easter attract more people, c.60-80 attending. Refreshments are offered after the services and there is a regular monthly coffee morning as well as other occasional social and fundraising events such as church quizzes, music events and murder mystery evenings. In 2023 a scratch choir for Christmas was formed to support the Carol Service. The choir continue to meet and enjoy singing together under the musical direction of a member of our church family. In 2025 we plan to hold our next Flower Festival in the church.





OXNEAD

The Village

Oxnead is a lost settlement which currently consists of a few houses, farm buildings, Oxnead Hall and the church. Oxnead Hall is a luxury venue for wedding receptions and the facilities have been upgraded to provide further accommodation for guests. Oxnead Church plays its part as many wedding ceremonies and blessings are held here prior to the reception in the hall. There is a good working relationship with Oxnead Hall.

The Church

Oxnead Church is built of flint with stone dressings and dates from the 13th Century. Inside this beautiful little church are memorials to the Paston Family who owned the hall during the 16th and 17th Centuries. The church does not have any permanent heating, but portable heaters have been brought in for winter weddings. In 2023, there were 18 weddings and in 2024 a total of 16. (the officiant duties are spread across the Aylsham team of clergy).



The Congregation

BCP Evensongs are held in the church on the third Sunday of the month between May and October. It is very encouraging that wedding couples often join us for these services.





LAMMAS

The Village

The parish is situated on the south bank of the River Bure, upstream from Buxton and with Buxton Mill as the boundary between the two villages. The population is around 130. Civilly it is one parish with Buxton, but they are two distinct and separate communities. Lammas has a village hall and a small estate for light industry and there are schools, shops and pubs in neighbouring villages. A good bus service is available.

The Church of St Andrews

The Church building is medieval with Victorian restoration. It is built of flint with limestone facings and a timber and tiled roof. The tower contains five bells. The building is in good order because when work needs doing it is carried out. The noticeable feature is the 'weeping' chancel of about 15 degrees out of true. The ground plan is of a nave and chancel together with a vestry under the tower and a south porch. The organ was restored in 2010 through a major fundraising campaign.

The church's especially scenic position alongside the River Bure provides a beautiful setting and an attraction for weddings and events. There is a large display of daffodils each Spring. The churchyard is well tended with areas set aside for wildlife. The Parish Council contributes to the maintenance of the Church grounds. The Electoral Roll stands at 9. There are six members of the PCC. The village community is very supportive of the Church by attending special services and social events to raise funds. Events include an annual barbecue, flower festivals, open gardens and concerts. An appeal launched in 2016 brings in a regular income.



The Congregation

Church attendance averages eleven per service. Special services such as the carol service usually see a full church. The major festivals usually have a good attendance. There are two services a month in St Andrew's and the service tradition is to use the 1662 prayer book. In 2024 we held our first walking Nativity Service in the churchyard which was very well supported by local families and was very creative.



MARSHAM

The Village

Marsham is situated on the A140, halfway between Norwich and Cromer. There are approximately 600 residents including children. There is a pub, but no village shop. Aylsham is the closest shopping centre two miles away. This is mainly a farming area, with several small businesses within the village boundaries on light industrial parks.

The Church

All Saint's Church is the largest of the Bure Valley churches. There are several outstanding features such as a rood screen painted with 12 apostles, hammerhead timbered roof with carved angels, a seven-sacrament font, eight tower bells, and a small amount of medieval glass. In recent years, funding has been raised to complete the installation of kitchen and toilet facilities, to boost our ability to offer events and build on our desire to be a village hub.



There are 15 people on the Electoral roll and a PCC with 5 members.

The Congregation

There is one service a month of Holy Communion (Common Worship) and our music is provided using a music system, with an occasional organist. Our congregation is small, approximately 10-12 adults.

The seasonal services attract more local people. A Pet Blessing Service has proved popular in the past and a recent Climate Sunday event was enthusiastically attended by around 250 people.

A monthly Coffee morning has started now that kitchen facilities are available, which is growing in popularity.



The Mercers' Company is a very active patron of Aylsham & District Team Ministry. They have historical connections to Marsham and Burgh Church, for which they provide annual funding and take a particular interest. Mercers' Charitable Foundation has also provided additional funding in recent years to the Team Ministry, including the funding provided for our part-time administrator.



Occasional Offices

The Bure Valley are blessed to have a good number of occasional offices to perform. Our view is that by being available, offering a warm welcome and being as accommodating as possible we draw others into the love of Christ.

Baptisms across the Bure Valley group of church, would be about 8-10 in a normal year. These have taken place within Sunday morning services as well as at other times on a Sunday.

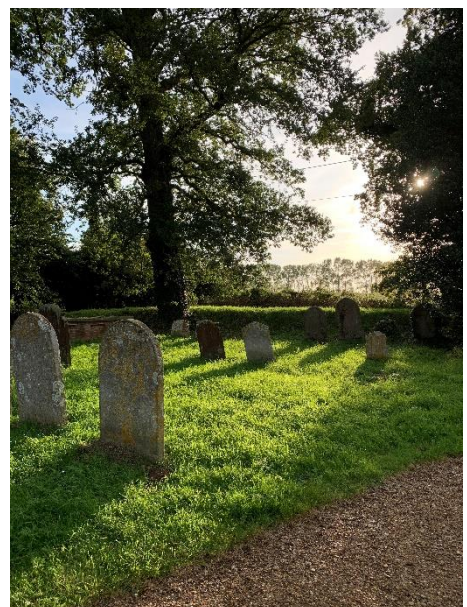


Weddings are popular in this part of Norfolk, mainly due to our proximity to Oxnead Hall, but also because of the picturesque nature of our churches. In 2022, there were 32 weddings from March-November. In 2023 there were 22 weddings and in 2024 there were 16.

Because there are so many weddings in Oxnead, this ministry is shared with colleagues across the Aylsham Team Ministry to help spread the load.

There have been around 20 funerals, on average each year for the past five years. All Bure Valley churches have open churchyards. Our PCCs do an excellent job of keeping our churchyards looking tidy and try to balance the need for good biodiversity. Local people are keen to use the churchyard space for both burial and interments as well as a place for quiet reflection.

Our local crematoria are in Cromer (20 minutes away) and St Faiths (about 15 minutes away). We have very good working relationships with our local funeral directors, and together, ensure that bereaved families have the best care during their time of loss. Funeral ministry is important, and we offer after care as a matter of course, as well as maintain contact with next of kin for services such as All Souls.



Environmental Matters – ECO CHURCH

Across the Aylsham and District Team we are committed to working towards meeting the aims of our Environmental policy. The management of each churchyard makes a valuable contribution to the biodiversity within the area. In particular within the churches of the Bure Valley Group..

- All 6 PCCs have successfully attained their Bronze Award under the A Rocha UK scheme
- Improvement plans are being developed in each church with identifiable actions to further progress our eco-credentials
- Wherever possible, skills/experience/learning are being shared across the churches
- It is the intention to involve the community, particularly schools in the development of some eco actions

“We want our church to be a hub for local community, reaching out and bringing people together”

“to love and worship God and to build faith”



OUR HOPES FOR THE FUTURE

- For people in the churches to be confident about Christianity and how our church communities can benefit everyone.
 - To have a plan for mission that enables us to work well together in the churches, and in our group of churches in the Bure Valley embracing the five marks of Mission and our Diocesan Vision.
 - To increase our presence in the villages, to encourage others to use the churches in a variety of spiritual and community ways.
 - To love and worship God. To witness to and pray for the surrounding villages and towns
 - To embrace working with our local schools and to build on existing good relationships
-

And finally...

We thank you for taking the time to read our parish profile. We hope that you have been inspired to find out more and to consider prayerfully whether you might be our next Team Vicar for the Bure Valley Group of Churches.

For more information on the parishes that make up the Aylsham & District Team Ministry take a look at our website and facebook pages:

www.aylshamparishchurch.org.uk

<https://www.achurchnearyou.com/church/33189/>

<https://www.achurchnearyou.com/church/10358/>

<https://www.achurchnearyou.com/church/909/>

<https://www.achurchnearyou.com/church/10361/>

<https://www.achurchnearyou.com/church/10367/>

<https://www.achurchnearyou.com/church/910/>

<https://www.achurchnearyou.com/church/10362/>

www.facebook.com/BureValleyChurches

www.facebook.com/Aylshamparishchurch

APPENDIX A

Parish Share Payments in the Bure Valley Group of Churches 2022 - 2024

PARISH	PARISH SHARE REQUEST 2024 £	2023 Paid	2022 Paid
Badersfield	4,235	66%	52%
Brampton	3,708	54%	76%
Burgh next Aylsham	6,890	100%	100%
Buxton with Oxnead	23,031	61%	77%
Lammas	6,890	93%	68%
Marsham	6,890	100%	100%
TOTAL	51,644	79%	79%